



**lessons**

**courses**

**community art**

Zita Rá



lessons

courses

Zita Rá

community art

# CONTENT

## 3D SCULPTURES

animals  
humans  
abstract

## MASKS

tribal  
emotional  
animal

## RELIEFS

animals  
signs

## PRACTICAL

benches  
boxes

spoons

bowls

mirrors

clock

lyre

sword

toys

birdhouse

walking stick

## STONE

breeze block

constructed

## MODELS

clay

wax

## PAINTINGS

watercolour

## OTHER CRAFT

engraving

linocut

origami

textile

puppet-making

latch-hooking

basket-making

enamelling

mosaic

bread oven

greenwood turning

costume-making

## PRIVATE COURSES

regular adult classes

adults with special needs

## COMMUNITY ART

desk-making

totem-pole

Banoffi, the 'super-clone'

Rudi, the papier-mache dino

Seatiger

Hannibal, the 'snowphant'

pumpkin-carving

painted hubcaps

Phil, the tin-giraffe

Icy, the ice-dragon

school exhibitions



The artworks in this collection were produced by my students in my art classes. Over the years I have taught many different mediums to children at all levels up to KS4 in various schools and run private courses for adults in Woodcarving and Sculpture. Some of the artworks were created by children and adults with special needs.

This book also contains images of community art and exhibitions I have organized in the past.





# 3D SCULPTURES

animals  
humans  
abstract





TREE TRUNKIES  
NOCN ENTRY

silver birch





SMALL SCULPTURES

pine



BIRD SCULPTURES  
NOCN LEVEL 1

silver birch, pine  
wax models



# PEACOCK NOCN LEVEL 1

pine  
wax model





OWL  
NOCN ENTRY

pine





GIRL AND DOG  
NOCN ENTRY

mahogany,  
pear





CAT SCULPTURE  
NOCN LEVEL 1

pine  
wax model



TURTLE  
NOCN LEVEL 1

silver birch,  
burning





# FIST SCULPTURE NOCN LEVEL 1

pine  
gilding  
plaster model





NON-FIGURATIVE

birch, pine

# BIG HEART

sequoia





# MASKS

tribal  
emotional  
animal



TRIBAL  
MASKS  
mixed medium



# MASKS

birch, cedar  
wax model





MASKS







MASKS  
OF EMOTIONS

pine, cedar  
silver birch



ANIMAL  
MASK

Painted, gilded pine





# RELIEFS

animals  
signs

# RELIEFS

cherry, pine







ANIMAL RELIEFS  
NOCR Entry

mahogany, oak, cedar





ANIMAL RELIEFS  
NOCR Entry

cherry, oak, cedar





## ANIMAL RELIEFS NOCR Entry

cherry, mahogany, cedar





## DRAGON AND EAGLE

charred pine and natural pine



TIGER RELIEF  
NOCR LEVEL 1

pine



# ANGEL AND DRAGON

painter relief  
pine



# WARRIOR NOCN LEVEL 1

pine





RELIEFS  
NOCR Entry

oak, pine, birch







RELIEF  
NO CR  
ENTRY

maple



## SIGN-MAKING NOCN LEVEL 1

reclaimed pine  
stone pebbles





SIGN-MAKING

reclaimed wood





'IN ARABIC'  
NOCN LEVEL 1

mahogany





GRAFFITI ART

reclaimed wood



# PRACTICAL

benches

spoons

mirrors

lyre

toys birdhouse

walking stick

boxes

bowls

clock

sword



## CARVED BENCH

reclaimed wood,  
silver birch



Finish

CARVED TABLE

rsequia



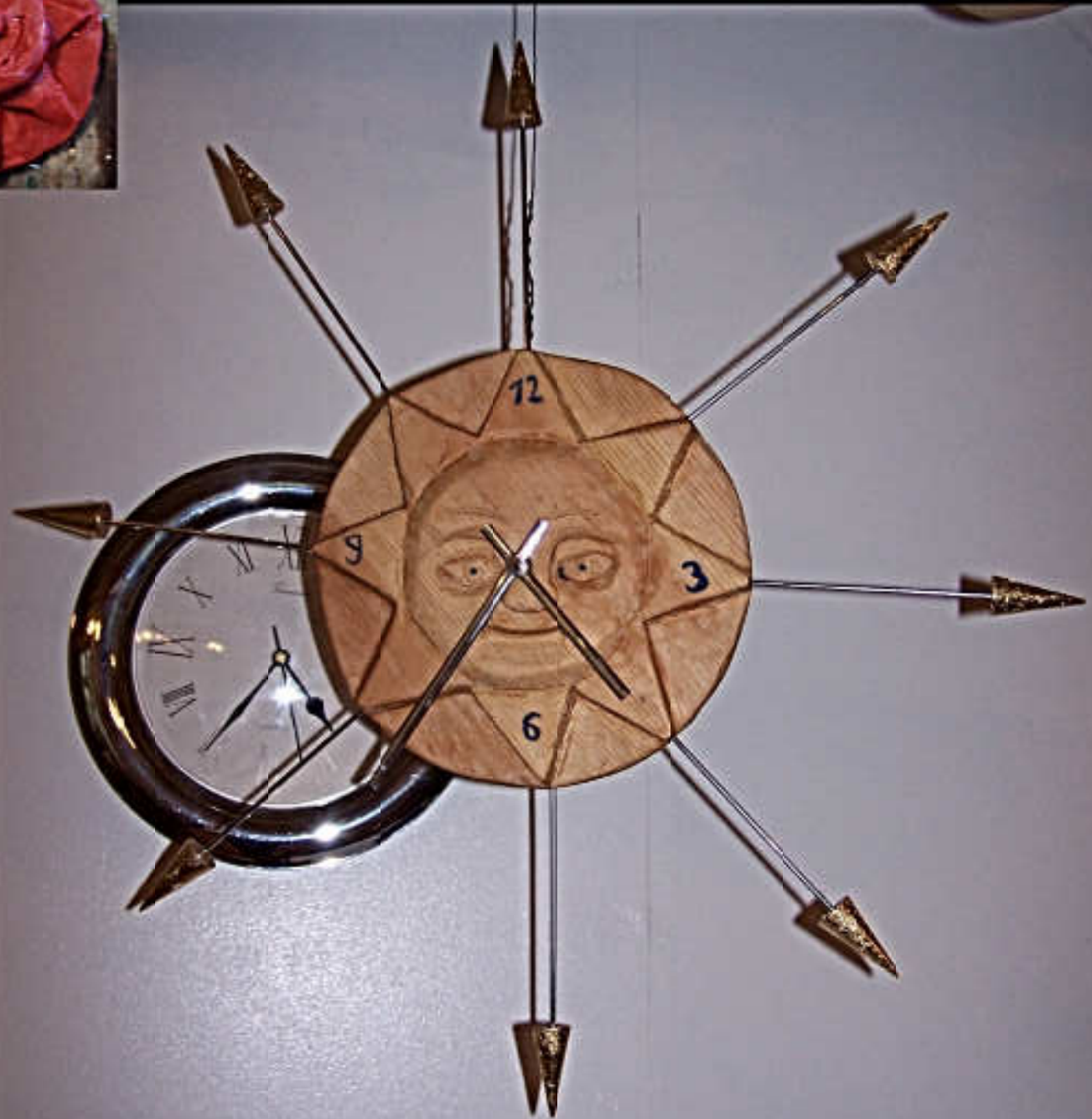
CARVED  
COFFEE TABLE  
NOCN LEVEL 1

pine



# CARVED CELTIC CLOCK NOCN LEVEL 1

pine, gilding, wax model





CARVED  
CELTIC MIRROR  
NOCN LEVEL 2

mahogany



CARVED MIRROR  
NOCN LEVEL 1

pine





CARVED  
BOXES

• mahogany,  
• pine





SPOON  
CARVING





SPOON  
CARVING





WALKING STICK  
BIRD HOUSE

reclaimed wood



CARVED  
SWORD  
NOCN LEVEL 1

mahogany, enamelling







FLYING CREATURES  
MECHANICAL  
TOYS

Painted thin board



## LYRE-MAKING

elm, silver birch

# WOODCARVING

With KS 2  
Holywood Rudolf Steiner School  
Northern Ireland



TEACHING WOODCARVING TO CHILDREN







# PRIVATE COURSES

regular adult classes  
adults with special needs

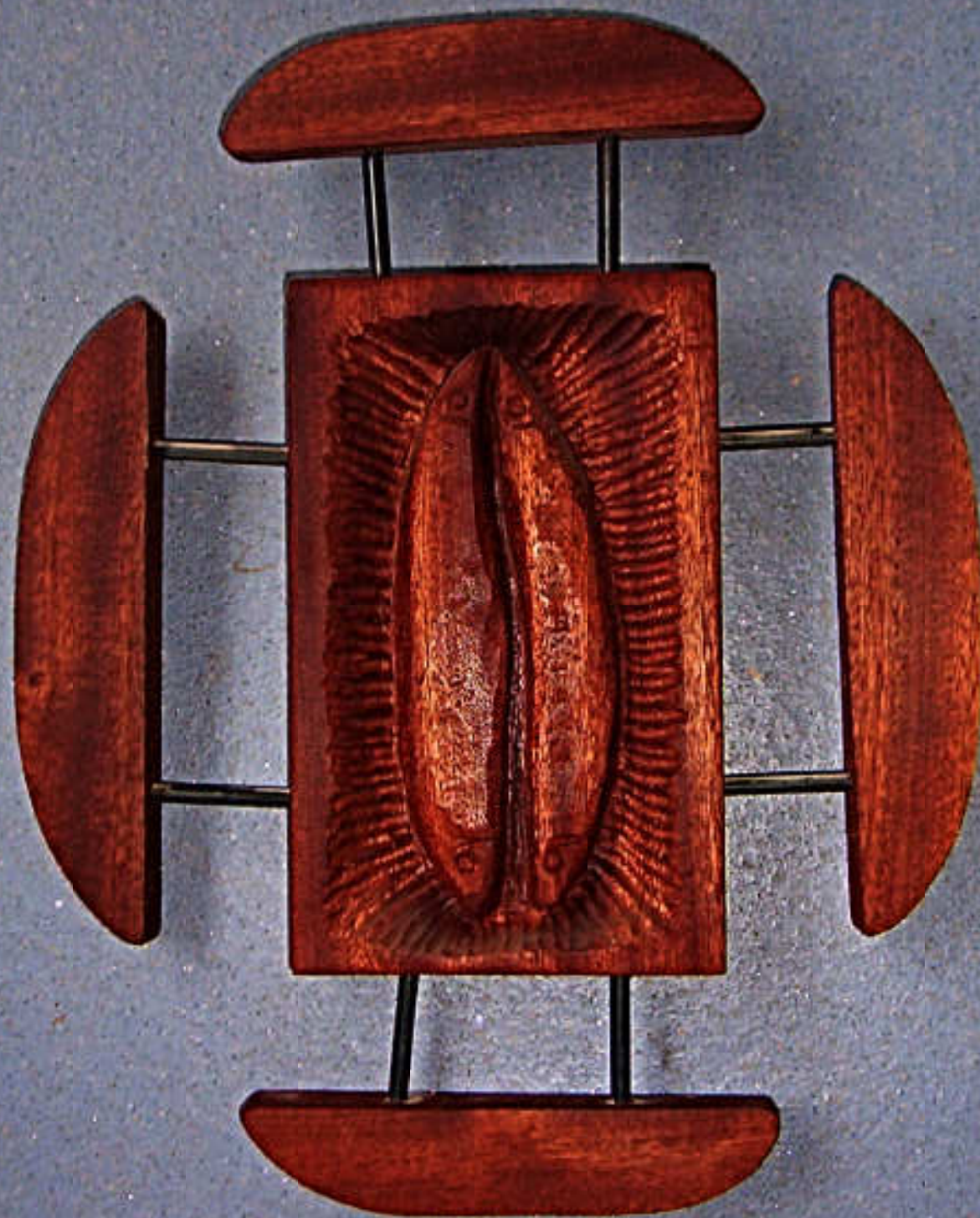


## WOODCARVING COURSE

With adults with special needs  
Mourne Grange Camphill Community  
Northern Ireland

## WOODCARVING

With adults with special needs  
Mourne Grange Camphill Community  
Northern Ireland





GREENMAN

cherry,  
wax model



AFTER  
BARLACH

alder

# COAL MINER

charred alder relief,





## GREENMAN

oak,  
clay model





BUDDHA

cherry



SEEDPOD

silver birch





NUDE

alder relief,  
wax model





MADONNA

lime



PUNCH

oregano  
pine





AFTER ERIC GILL

alder relief,  
wax model





HAND PLATE

cherry





GREEN WOMAN

pine

ABSTRACT

yew





# STONES MODELS

breeze block  
constructed stone  
clay  
wax

# STONE BOWL

breeze block





CAT  
breeze block





## HITCHHIKER

found concrete, iron  
and sand stone

DRAGON MODEL  
FOR ICE DRAGON

WAX





MODELLING

clay, wax

# HORSE MODEL

clay





# PAINTINGS

watercolour



COLOUR STUDY

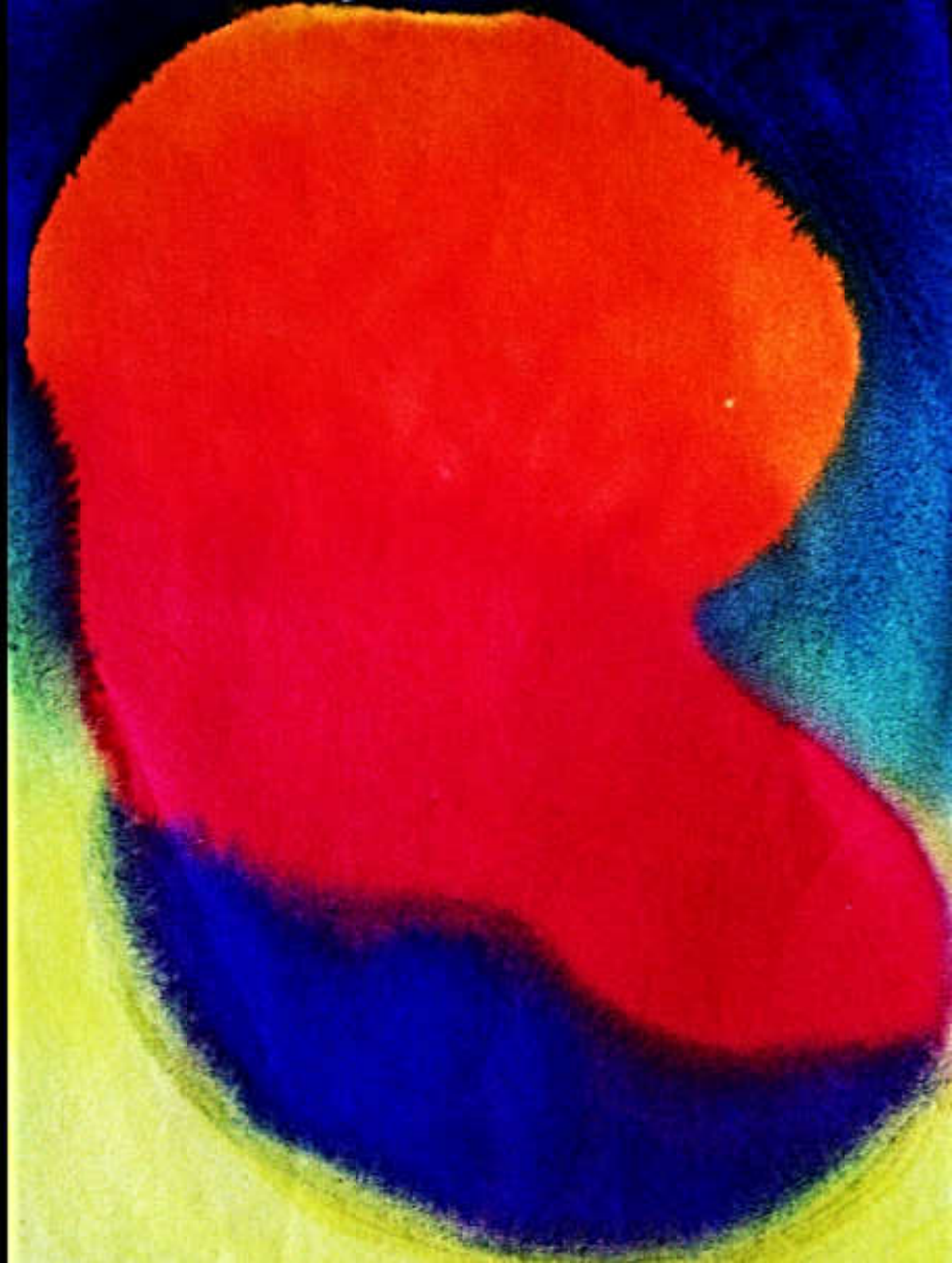




CRYSTAL STUDY



COLOUR STUDY



COLOUR STUDY



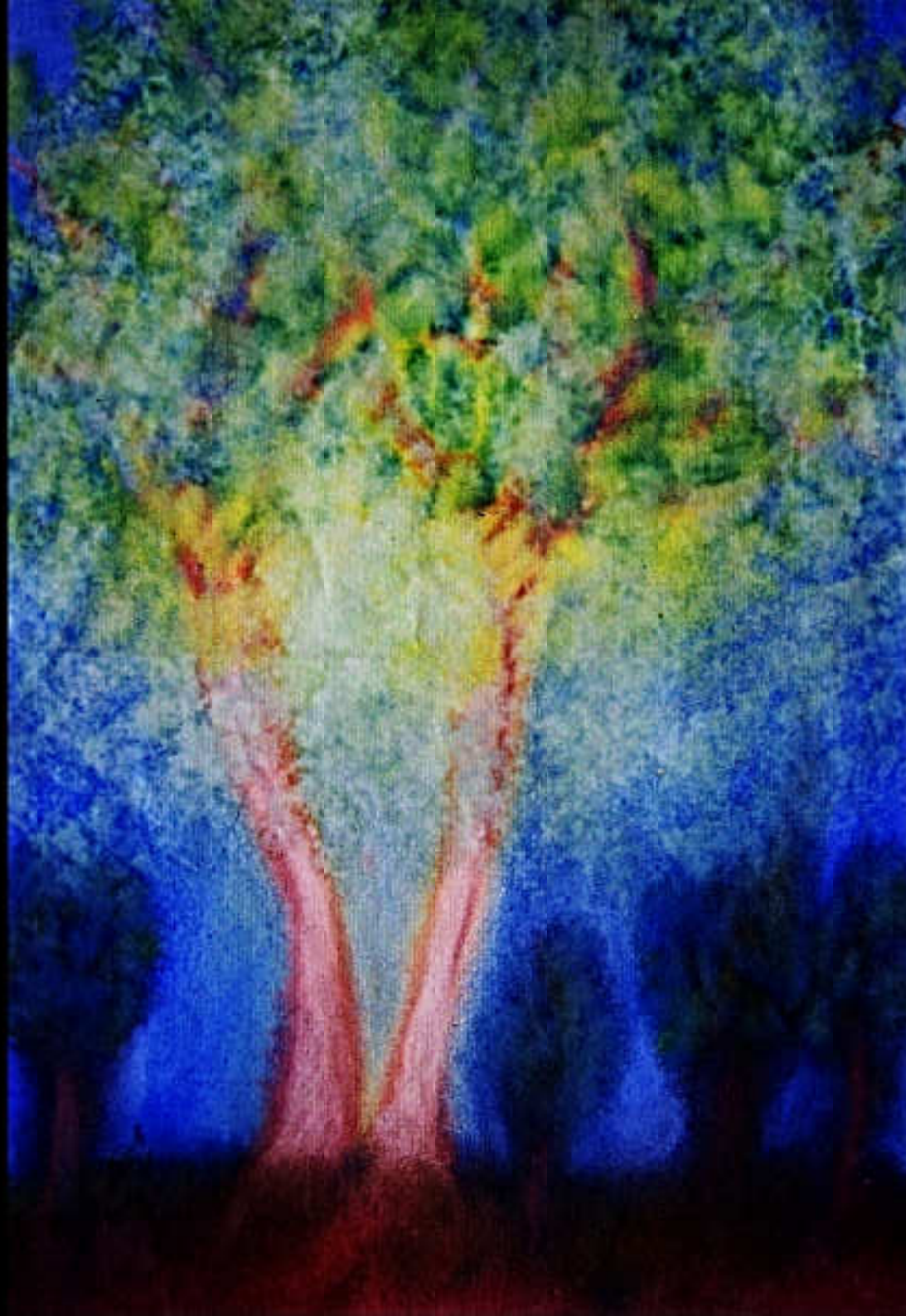
FLOWER STUDY



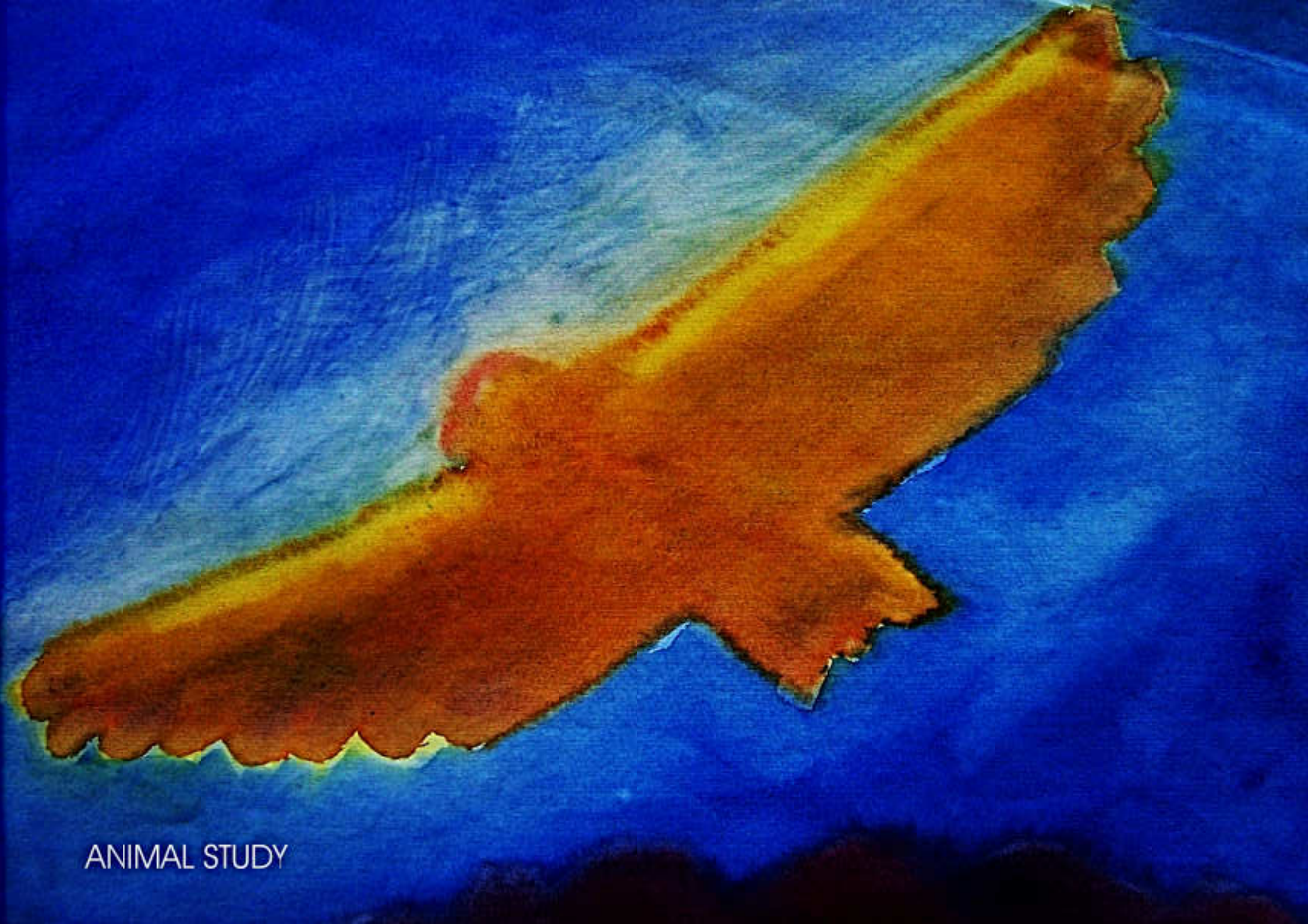
FLOWER STUDY



MUSHROOM STUDY



TREE STUDY



ANIMAL STUDY





ANIMAL STUDY



HUMAN STUDY



STORY ILLUSTRATION



LANDSCAPE STUDY

# WALDORF PAINTING & CARD MAKING

Eastern Fund-raising Project  
With Class 5 (KS 2)  
Holywood Rudolf Steiner School  
Northern Ireland





# OTHER CRAFTS

engraving

linocut

origami

textile

puppet-making

latch-hooking

basket-making

enamelling

mosaic

bread oven

greenwood turning

costume-making

JONAH

engraving  
copper foil board







## JONAH

lino cut block and print



ORIGAMI





ORIGAMI BOAT

paper, ( felt)

# PAINTED SCENERY

fabric, gold paper



## BATIK

With adults with special needs  
Delrow Camphill Community  
Aldenham, Herts



# PUPPETS

mixed media



THE DEVIL

mixed media



# LATCH-HOOK

group work







## BASKET-MAKING

With adults with special needs  
Delrow Camphill Community  
Aldenham, Herts



## FLOOR MOSAIC

With Class 8 (KS 3)  
Holywood Rudolf Steiner School  
Northern Ireland



## ENAMELLING

With adults with special needs  
Delrow Camphill Community  
Aldenham, Herts





## BREAD OVEN MAKING

With Upper School (KS 4)  
and Summer Camp  
Holywood Rudolf Steiner School  
Northern Ireland

## GREENWOOD TURNING

Teaching at an open day  
at the Austrian Woodcarving School  
and Class 8 (KS 3)  
at the Holywood Rudolf Steiner School  
Northern Ireland



A young boy with short brown hair is holding a large white rectangular board in front of his face. The board has three pieces of graffiti on it. The top piece is the name 'PHIL' in a stylized, blocky font with purple and red colors. The middle piece is the word 'JOKE' in a bubbly, green font with a pink outline. The bottom piece is the word 'TRUMENT' in a blue font with yellow stars and a white outline. The background shows a grassy area, a dark wooden building, and some trees.

PHIL

JOKE

Got

TRUMENT



COSTUME MAKING  
LION KING





# COMMUNITY ART

desk-making

totem-pole

Banoffi, the 'super clone'

Rudi, the papier-mache dino

Seattiger

Hannibal, the 'snowphant'

pumpkin-carving

painted hubcaps

Phil, the tin-giraffe

Icy, the ice-dragon

school exhibitions

The following artworks were results of co-operative efforts in various communities, often as part of a fund-raising event.

The colourful desks were made for my first class with the help of some enthusiastic parents of the Humanistic Co-operative Learning school, Budapest in 1991. It was a design I created for the most economic use of the plywood sheets. The parts of the desks could be cut out from the sheets without any waste material.

The totem-pole was carved at Philpots Manor School in 2008, as an extra-curricular activity to enforce 'team spirit' at one of the all-boy households.

Banoffi, like its name sake the famous pie, is a big mixture. Many young people took part in this two-stage project at Philpots Manor School in 2010. First, everybody created a merge creature as an artistic reflection on the issues of genetic modification and cloning. In the second stage, one aspect was selected from every work that became part of the big mix of Banoffi, the 'super clone'.

Rudi, the papier-mache dino was created together with a group of children and parents of Holywood Rudolf Steiner School at the Green Living Fair, Castle Espie in 2001. It was a fund-raising project for this struggling Waldorf school in Northern Ireland. Rudi was more than six metres long, made of recycled paper the children collected in the school community in one week. During the fair, the visitors were asked to sponsor this environmental project by painting their signature on the dino for £1 each. The project raised £1000.

The papier-mache Seatiger was created with Class 4 at Holywood School. It was presented to Seacat Co. for their support towards the school's 'clean beaches' campaign in 2001.

Hannibal's famous white elephant crossed the Alps once more, invading the car park of the sculpture school where I studied in Austria in 2003. The massive 'snowphant' was created together with my fellow sculptors as a promotional project for the Summer Academy program of the school. I was in charge of publicity of the school in that time.

The Pumpkin Carving Competition is a newly introduced event, now part-of the seasonal festivals at Philpots Manor School. Some of the children grow their own pumpkin in the school garden and carve it in the Sculpture Studio for Halloween..

As Philpots Manor School is located near a dangerous main road, a speed awareness project was created. The school community collected some hubcaps that fell off the cars on this particular road and the children painted designs on them to draw awareness to the sheer number of these hubcaps, which were then displayed on the trees in the school ground. on the Open Day, summer 2009.

Phil, the life-size tin-giraffe was made of 450 tin cans as a recycling awareness project with the children and staff at Philpots Manor School in summer 2006. Later Phil was sold on Ebay raising £650 for our sister school in Sierra Leone.

Icy the ice-dragon was carved from one tonne of ice at a local arts festival in November 2007. Our children carved in situ, surprising the passersby that young people with emotional behaviour problems can work with such an excellent team-spirit.

These two impressive major school exhibitions were held at Chequer Mead Arts Centre and at Emerson college in 2008 as part of a promotional program at Philpots Manor School. I set these exhibition up together with some children who also took turn in invigilating.

## SCHOOL DESKS

These desks I designed and created for my first class at the Humanistic Cooperative Learning School, Budapest 1990



# TOTEM POLE

silver birch





BANOFFI  
IN THE MAKING

# BANOFFI

Painted carved  
pine,  
group work



CLONED CLOWNS

of the Animal World

# RUDI, THE DINO

papier-mache

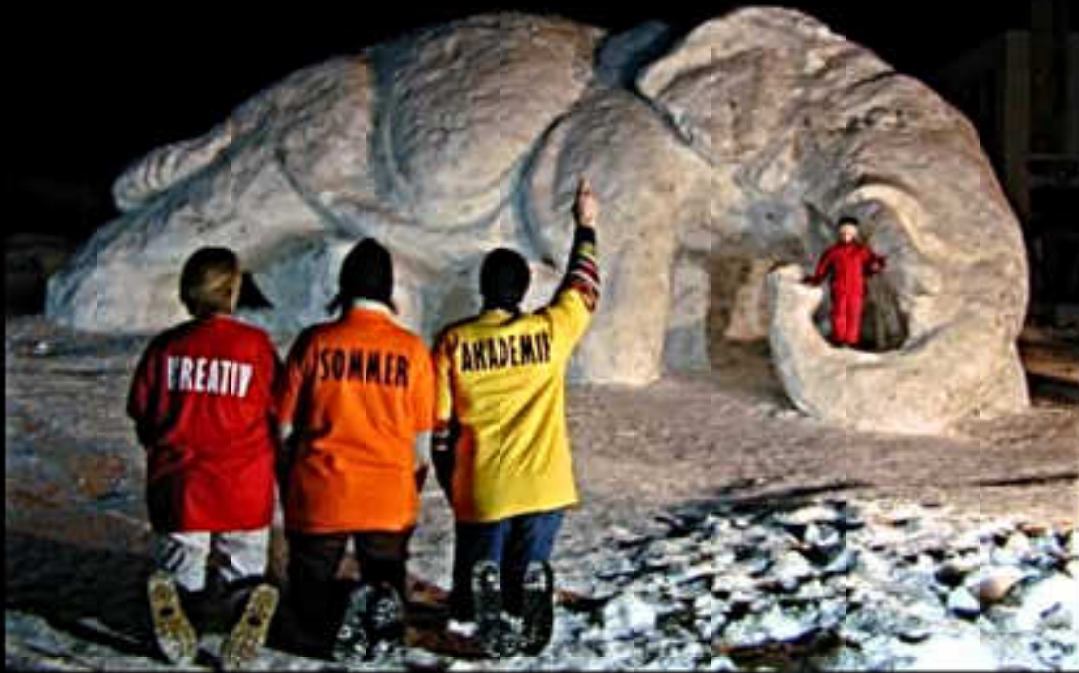


# SEATIGER

papier-mache







SNOWPHANT

snow

# PUMPKIN CARVING





HUBCAPS

acrylic paint



## GIRAFFE IN THE MAKING

450 tin cans,  
gym horse,  
copper pipes



## GIRAFFE

450 tin cans,  
gym horse,  
copper pipes

# ICE DRAGON

1 tonne of ice





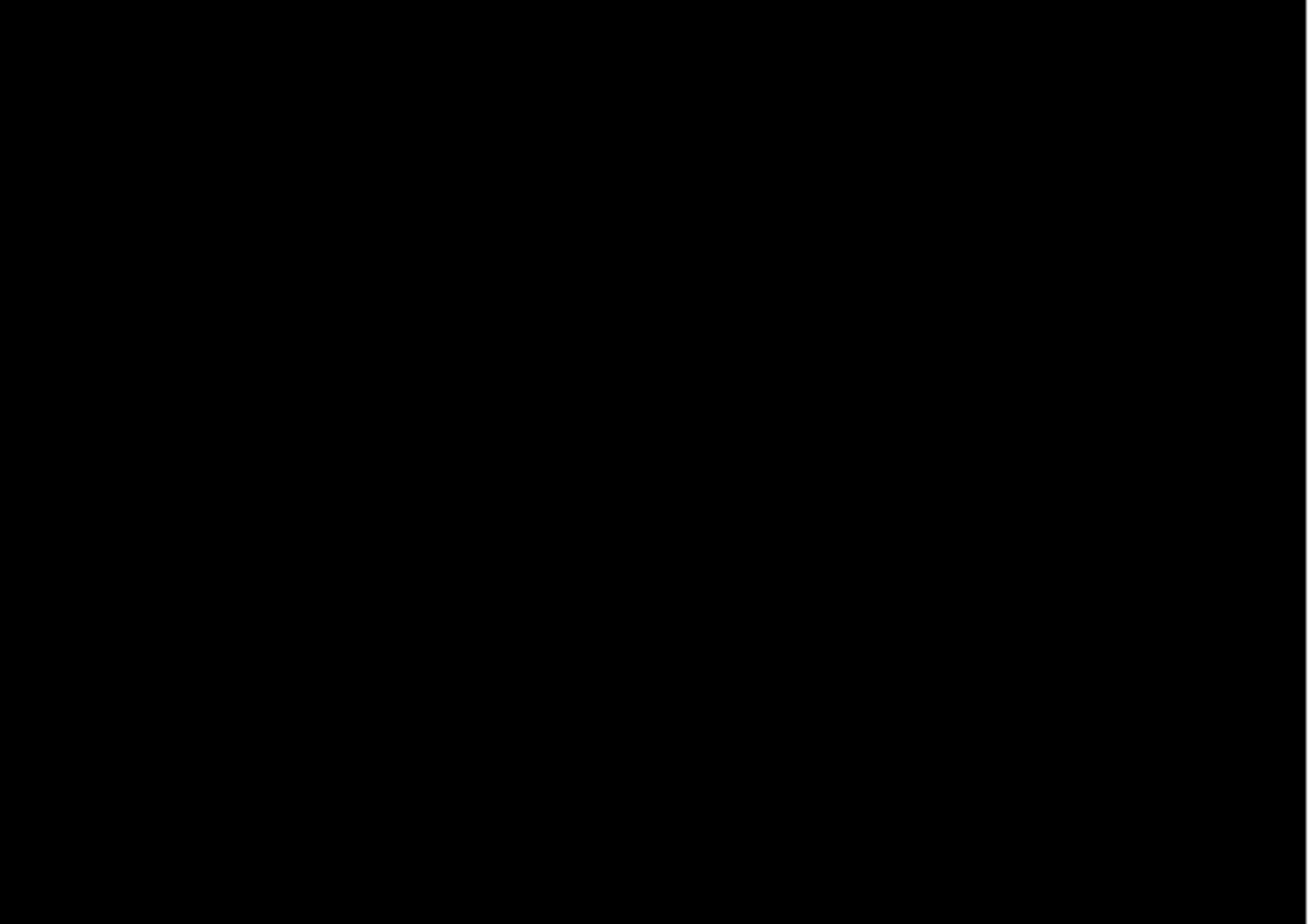


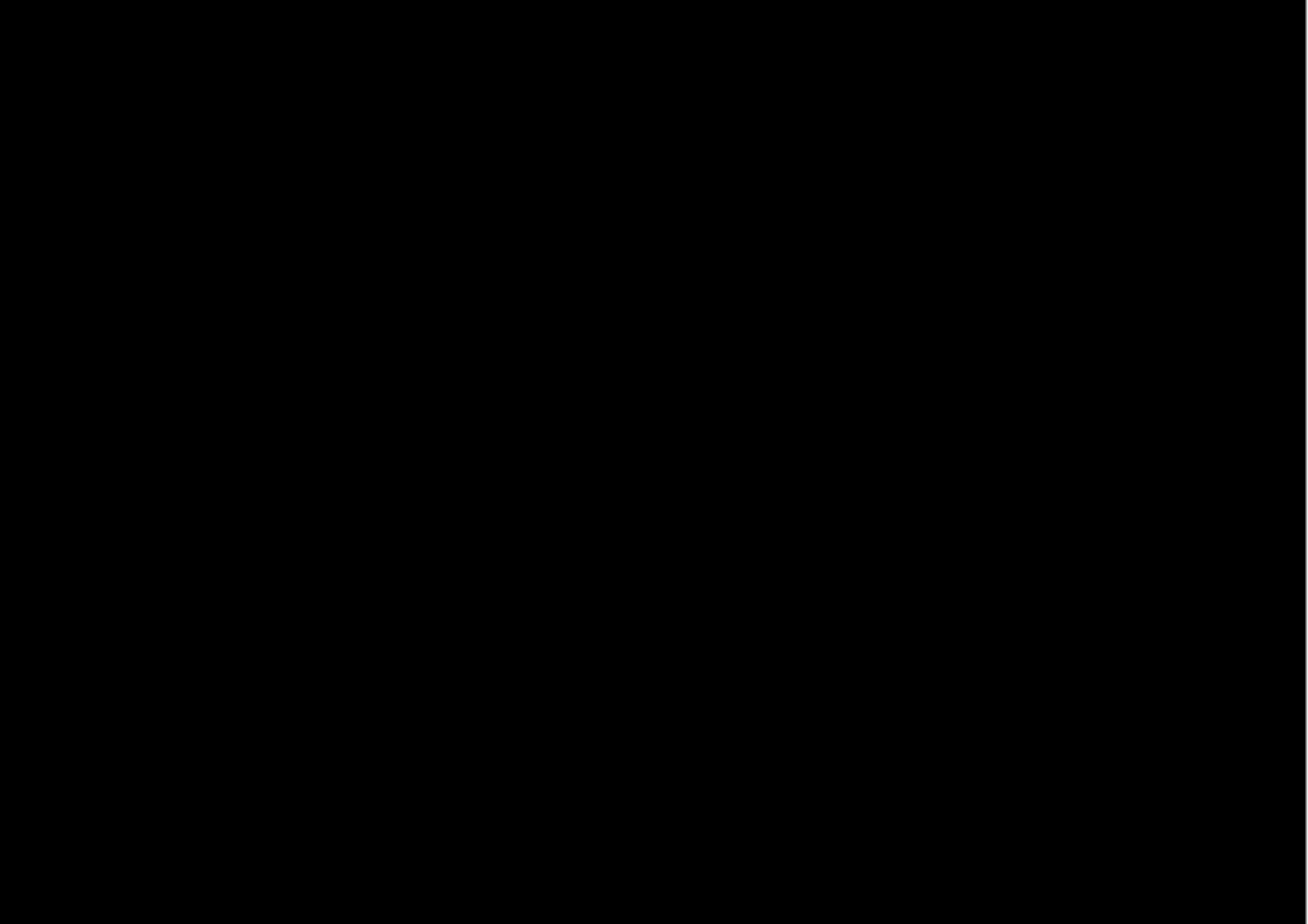
EXHIBITION,  
CHEQUER MEAD  
ARTS CENTRE

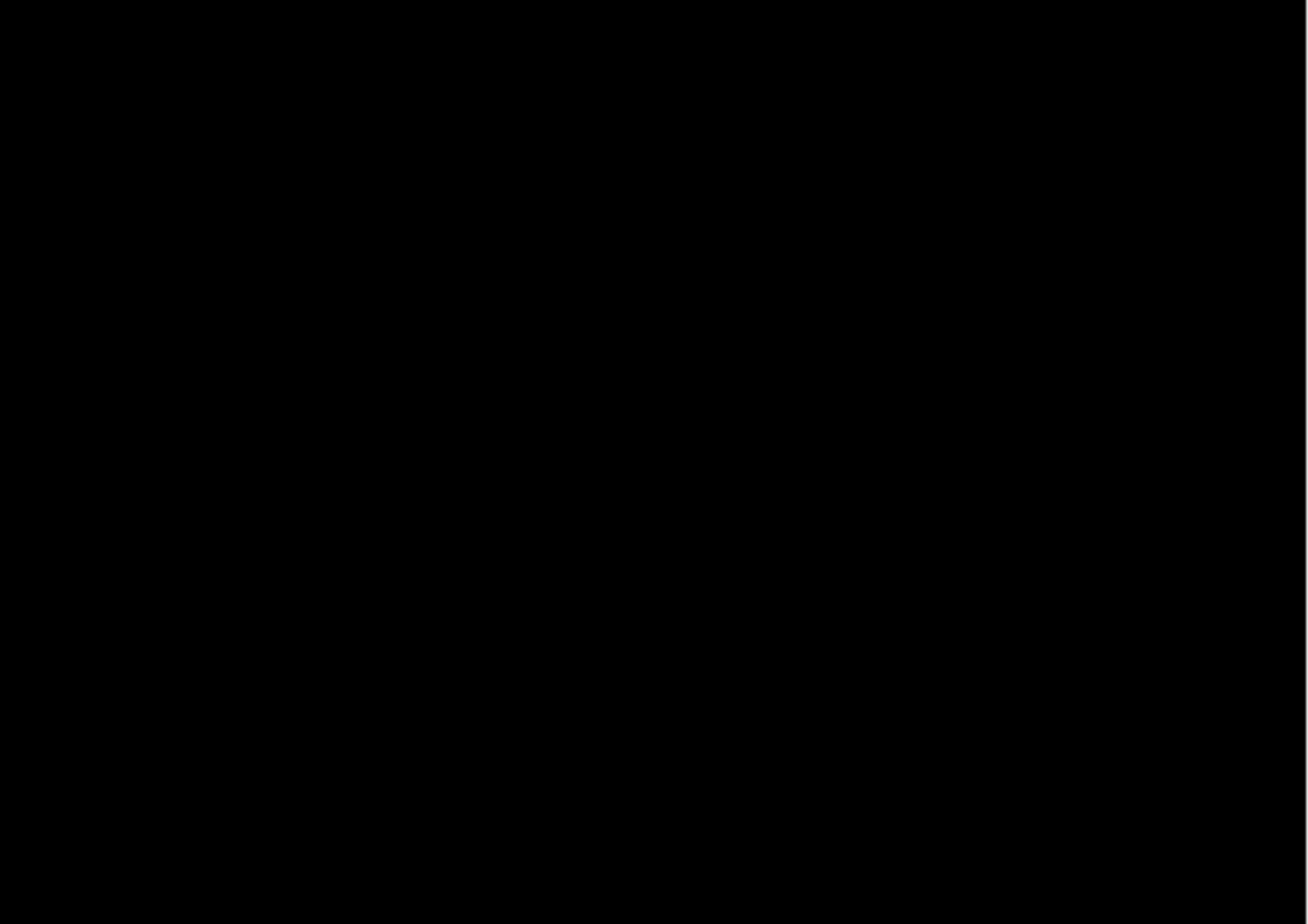


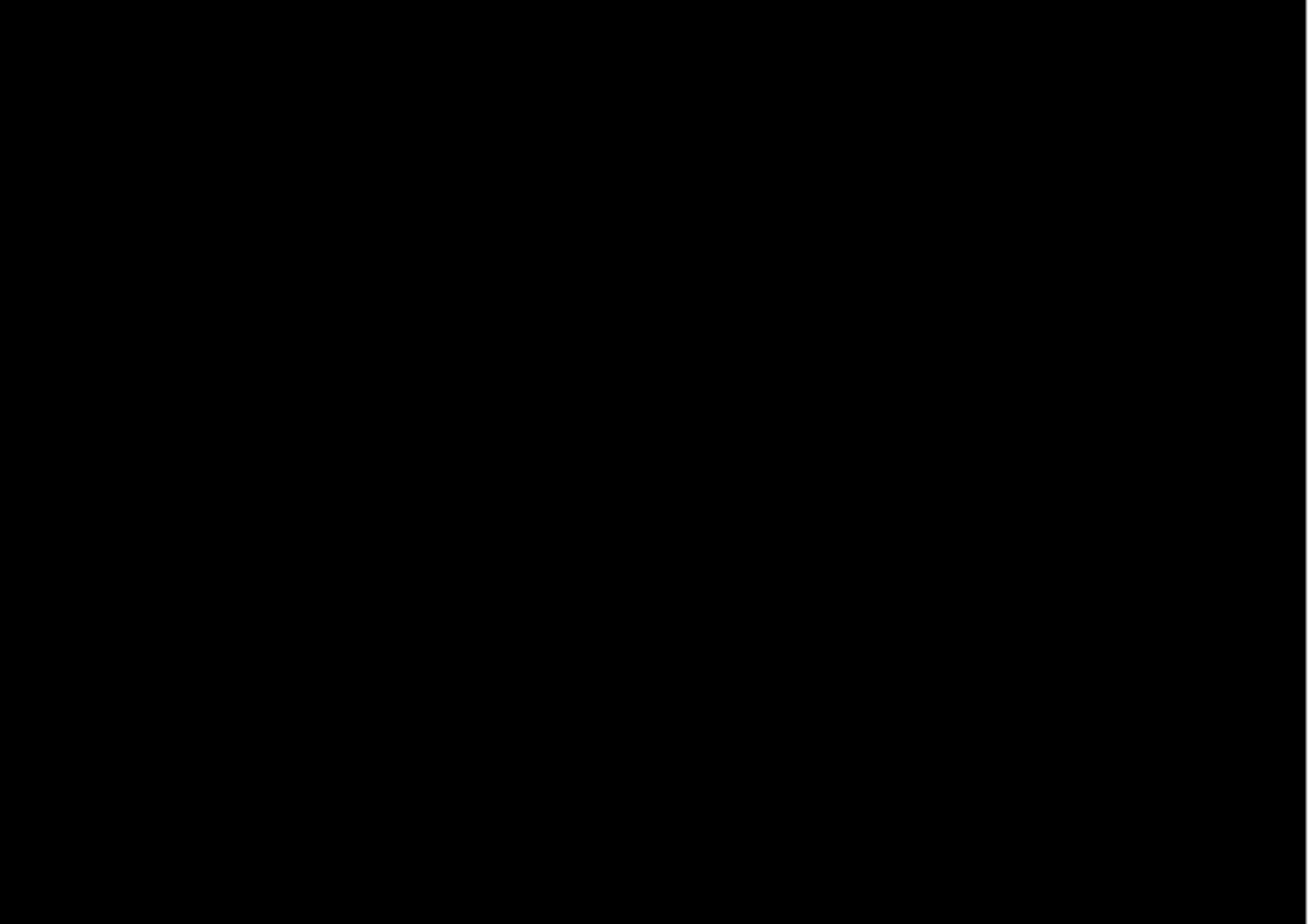
# EXHIBITION, EMERSON COLLEGE

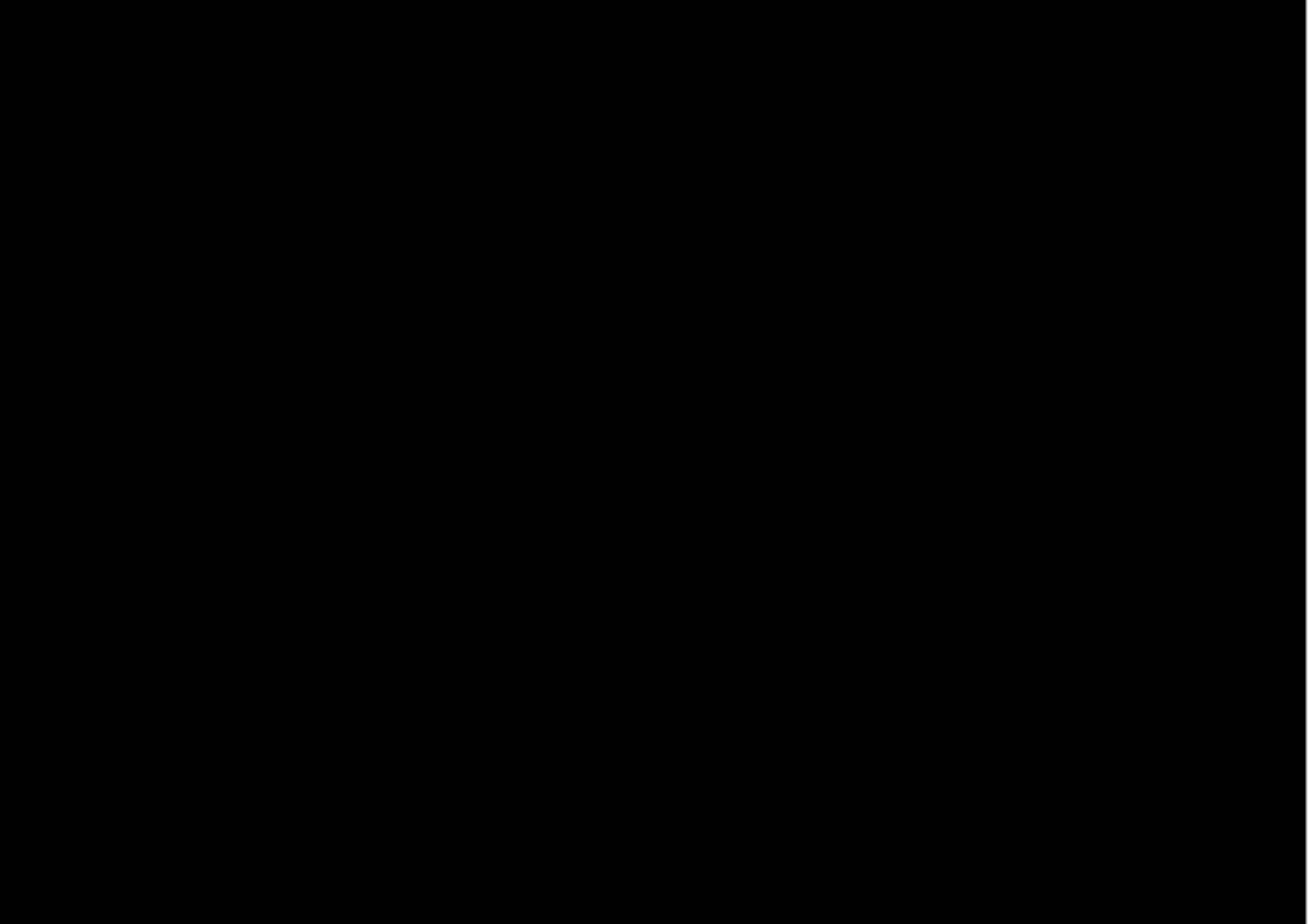


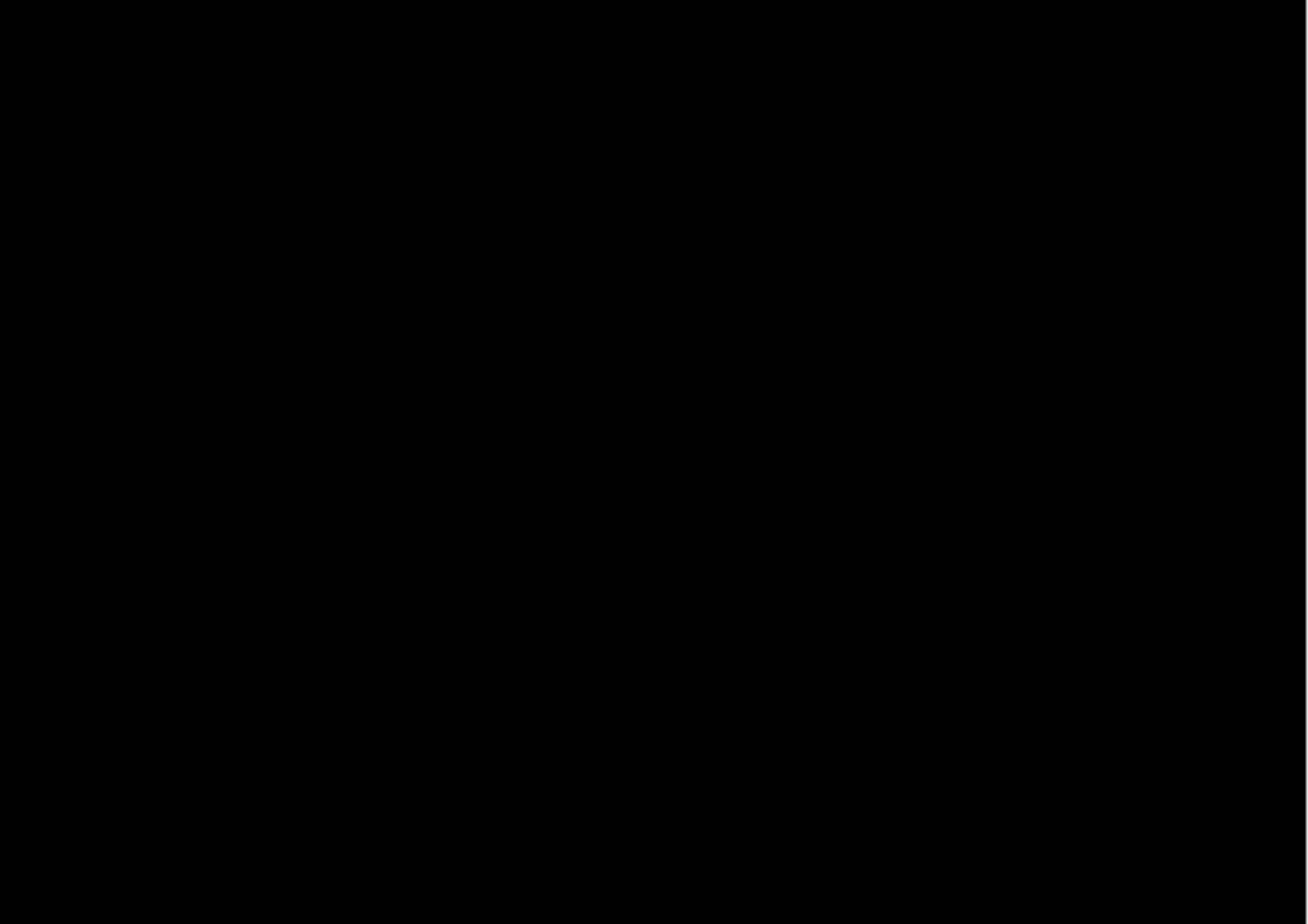












All rights reserved by the author of this book

For information contact [www.zitara.co.uk](http://www.zitara.co.uk)

Printed by Design to Print, Forest Row in 2012





